



## 10 DAY QUICKSHIP PROGRAM

*Please note that during the pandemic, restrictions are in place for our QuickShip Program. Availability of parts, fabrics, shipping restrictions to many territories and reduced manufacturing capacity may inhibit our ability to meet your request. We will do our very best, however "Shipping within 10 business days-or it's free" is not applicable at this time.*

### 10 Day Guarantee

Upon Acceptance and acknowledgement, 10 Day Quickship orders will ship from our factory (165 City View Drive Toronto, On, Canada) within 10 Business Days (excluding any statutory holidays) or the order will be deemed free. The original bill of lading, with your shipment from the Spec™ factory at 165 City View Drive Toronto, On, Canada, shall determine the shipping date.

Spec will endeavor to expedite your shipment upon departure from the factory.

Spec reserves the right to cancel or change the 10 Day Quickship program at any time, and may refuse to acknowledge a 10 Day Quickship order at our discretion.

### Credit

All purchase orders are subject to credit approval. For our established dealers, terms are net 30 days from date of invoice. In some instances a deposit may be required to accompany an order. We will advise you if a deposit is required when we acknowledge your order.

### Damage and Claim

All products are carefully examined before packaging for shipment. Ownership of your product passes to you upon pick-up by the carrier at our factory. Upon receipt of your order, check for any physical damage to the product (even if the carton is unmarked) that may have occurred during transit. Note any physical damage on all copies of the bill of lading and enter a freight claim with the carrier immediately. If you discover damage while unpacking, arrange for a carrier inspection immediately. Any damage, visible or concealed, must be reported to the carrier within 15 days from delivery. Our customer service people would be pleased to help you in any way during the process.

### Cancellations, Returns and Changes

Orders are in process once acknowledged and may not be canceled without our consent. You may be responsible for work in process and administration costs including labor and raw materials. Merchandise may be returned only with our clear written authorization. Freight costs for return are your responsibility. Our product designs, processes, and materials are always under review ensuring the best quality and value to you. We will do our best to notify you as improvements occur.

### Ordering Procedures

Please submit all 10 Day Quickship orders in writing via fax or e-mail direct to factory. Orders sent by fax do not require confirmation. Please use model numbers and finish codes with a brief description of the product(s) being ordered. Your order will be acknowledged in writing to you once clarified. We request your assistance in checking our acknowledgement's accuracy to your order to ensure discrepancies do not occur. It is your responsibility to let us know of any discrepancies within 24 hours of receiving the acknowledgement.

### Quantity Limit

The 10 Day Shipping Program is available for a selection of tables and chairs to a maximum quantity of 20 pieces per order. If you need more than this quantity on your 10 day shipment, please contact Spec Customer service for approval. We will do our best to accommodate your needs. Spec reserves the right to limit product quantities for 10 Day shipments. The standard Spec shipping program applies to all 10 Day orders. Please refer to the online Shipping Program or contact Customer Service at 1.888.761.7732.

Spec reserves the right to cancel or change the 10 day program at any time and may refuse to acknowledge a 10 day order at our discretion.





Pricing May 2023  
Discount 57.7% from List prices

spec™

## 10 DAY QUICKSHIP PROGRAM FINISHES

### CHAIR FRAME / TABLE BASE / TABLE EDGE



Silver



Black

### DURASPEC SEAT / PLASTIC BACK & BACK PANEL



Black

### CHAIR ARMS

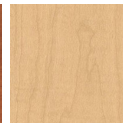


Black

### CHAIR WOOD BACK



Wild Cherry



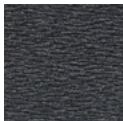
Fusion Maple

### TABLE EDGE

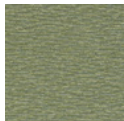


2MM

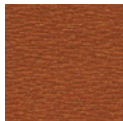
### FABRICS - MOMENTUM



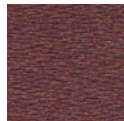
Fuse  
Azurean



Fuse  
Cress



Fuse  
Ginger



Fuse  
Iris



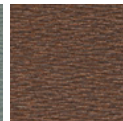
Fuse  
Lunar



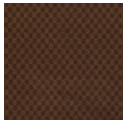
Fuse  
Malted



Fuse  
Pristine



Fuse  
Walnut



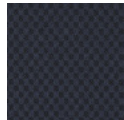
Insight  
Bark



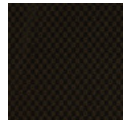
Insight  
Blonde



Insight  
Jade



Insight  
Midnight



Insight  
Pepper



Insight  
Periwinkle



Insight  
Summit



Insight  
Wasabi



Beeline EPU  
Canvas



Beeline EPU  
Eucalyptus



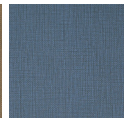
Beeline EPU  
Fossil



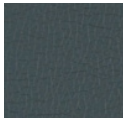
Beeline EPU  
Geyser



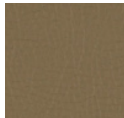
Beeline EPU  
Portobello



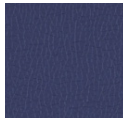
Beeline EPU  
Tidal



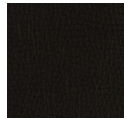
Canter EPU  
Ballad



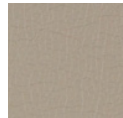
Canter EPU  
Earth



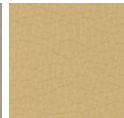
Canter EPU  
Ink



Canter EPU  
Onyx

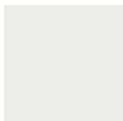


Canter EPU  
Quarry



Canter EPU  
Toasty

### TABLE TOP LAMINATE



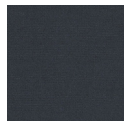
Designer  
White



Black



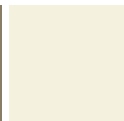
Dove Grey



Carbon Mesh



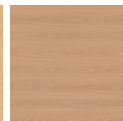
Shadow



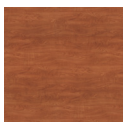
Antique  
White



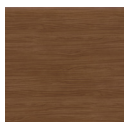
Fusion  
Maple



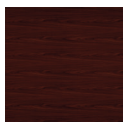
New Age  
Oak



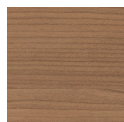
Wild Cherry



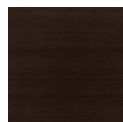
Walnut  
Heights



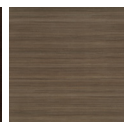
Empire  
Mahogany



River Cherry



Cafelle



Studio Teak



Asian Night

Toll Free: 1-888-761-7732



Pricing May 2023  
Discount 57.7% from List prices

Please note that during the pandemic, restrictions are in place for our QuickShip Program.

Availability of parts, fabrics, shipping restrictions to many territories and reduced manufacturing capacity may inhibit our ability to meet your request.

We will do our very best, however "Shipping within 10 business days-or it's free" is not applicable at this time.

spec™

## 10 DAY QUICKSHIP PROGRAM SNOWBALL 1

### Standard Features

- Black polyurethane arms
- Black or silver frame finish
- See 10 Day Quickship price list or Spec website for the selection of quick ship textiles
- 10 Day Program quantity limit of 20 chairs per order

For information on the 10 Day Program guarantee and terms and conditions, visit our website and go to 10 Day Quickship, Terms & Conditions tab.

### Options

- Snowball Dolly stacks 18"w Four-point Snowballs up to 10 high

### Snowball 1

COM 1.0 yd  
0.5 yd COM per single seat  
0.5 yd COM per single back

MODEL	COM	GR 1	GR 2	GR 3
1801	396	456	473	518
1811	396	456	473	518
1804	454	571	612	690



1801  
With arms  
20 lbs



1811  
Without arms  
19 lbs



1804  
With arms  
22 lbs

### Snowball 1 – Dolly

DESCRIPTION	MODEL	PRICE
Standard	1899	436
22" Midsize	1899M	626

Dimensions (inches)

	Standard	Midsize
height	36.5	36.5
width	21.0	23.0
depth	31.0	42.0



1899  
Standard  
18 lbs



1899M  
Midsize  
24 lbs



Pricing May 2023  
Discount 57.7% from List prices

Please note that during the pandemic, restrictions are in place for our QuickShip Program.

Availability of parts, fabrics, shipping restrictions to many territories and reduced manufacturing capacity may inhibit our ability to meet your request.

We will do our very best, however "Shipping within 10 business days-or it's free" is not applicable at this time.

spec™

## 10 DAY QUICKSHIP PROGRAM SNOWBALL 2

### Standard Features

- Black polyurethane arms
- Back with enhanced contours for superior comfort
- Black or silver frame finish
- See 10 Day Quickship price list or Spec website for the selection of quick ship textiles
- 10 Day Program quantity limit of 20 chairs per order

For information on the 10 Day Program guarantee and terms and conditions, visit our website and go to 10 Day Quickship, Terms & Conditions tab.

### Options

- Snowball Dolly stacks regular width four-point Snowballs up to 10 high

### Snowball 2

COM 1.0 yd  
0.5 yd COM per single seat  
0.5 yd COM per single back

MODEL	COM	GR 1	GR 2	GR 3
1851	421	490	512	554
1861	421	490	512	554
1854	492	615	654	734



1851  
With arms  
20 lbs



1861  
Without arms  
19 lbs



1854  
With arms  
22 lbs

### Snowball 2 – Dolly

DESCRIPTION	MODEL	PRICE
Standard	1899	436
22" Midsize	1899M	626

Dimensions (inches)

	Standard	Midsize
height	36.5	height 36.5
width	21.0	width 23.0
depth	31.0	depth 42.0



1899  
Standard  
18 lbs



1899M  
Midsize  
24 lbs



Pricing May 2023  
Discount 57.7% from List prices

Please note that during the pandemic, restrictions are in place for our QuickShip Program.

Availability of parts, fabrics, shipping restrictions to many territories and reduced manufacturing capacity may inhibit our ability to meet your request.

We will do our very best, however "Shipping within 10 business days-or it's free" is not applicable at this time.

spec™

## 10 DAY QUICKSHIP PROGRAM SNOWBALL 3

### Standard Features

- Black polyurethane arms
- Upholstered seat and wood back
- Back in Wild Cherry or Fusion Maple stains
- Back cut-out A
- Black or silver frame finish
- See 10 Day Quickship price list or Spec website for the selection of quick ship textiles
- 10 Day Program quantity limit of 20 chairs per order

For information on the 10 Day Program guarantee and terms and conditions, visit our website and go to 10 Day Quickship, Terms & Conditions tab.

### Options

- Snowball Dolly stacks regular width four-point Snowballs up to 10 high



Wood Back Design "A"

### Snowball 3

COM 0.5 yd  
0.5 yd COM per single seat

MODEL	COM	GR 1	GR 2	GR 3
1901	513	544	555	580
1911	513	544	555	580
1904	552	606	623	656



1901  
With arms  
18 lbs



1911  
Without arms  
17 lbs



1904  
With arms  
20 lbs

### Snowball 3 – Dolly

DESCRIPTION	MODEL	PRICE
Standard	1899	436
22" Midsize	1899M	626

Dimensions (inches)

	Standard	Midsize
height	36.5	height 36.5
width	21.0	width 23.0
depth	31.0	depth 42.0



1899  
Standard  
18 lbs



1899M  
Midsize  
24 lbs





Pricing May 2023  
Discount 57.7% from List prices

Please note that during the pandemic, restrictions are in place for our QuickShip Program.

Availability of parts, fabrics, shipping restrictions to many territories and reduced manufacturing capacity may inhibit our ability to meet your request.

We will do our very best, however "Shipping within 10 business days-or it's free" is not applicable at this time.

spec™

## 10 DAY QUICKSHIP PROGRAM URBAN

### Standard Features

- 0.875" frame
- DuraSpec Poly seat and Plastic back
- DuraSpec Poly seat, Plastic back and Back panel available in Black only
- Black or silver frame finish
- 10 Day Program quantity limit of 20 chairs per order
- Urban Dolly (Black finish only) stacks 8 chairs

For information on the 10 Day Program guarantee and terms and conditions, visit our website and go to 10 Day Quickship, Terms & Conditions tab.



Plastic Back  
& Plastic Back Panel

### Urban, DuraSpec Poly Seat & Plastic Back - Four-point

MODEL	Price
1401	495
1411	495
1404	693

#### Dimensions (inches)

seat H	18.0	seat W	18.0	arm H	27.0	total H	32.5
depth	22.0	total W	24.0	total W (no arms)	20.1		

Meets BIFMA Seating Durability Test to 500 lbs



1401  
With arms  
19 lbs



1411  
Without arms  
18 lbs



1404  
With arms  
22 lbs

### Urban – Dolly

DESCRIPTION	MODEL	PRICE
Standard	1499	436
Midsize 22"	1499M	626

#### Dimensions (inches)

	Standard		Midsize
height	36.5	height	36.5
width	21.0	width	23.0
depth	31.0	depth	42.0



1499  
Standard  
18 lbs



Pricing May 2023  
Discount 57.7% from List prices

Please note that during the pandemic, restrictions are in place for our QuickShip Program.

Availability of parts, fabrics, shipping restrictions to many territories and reduced manufacturing capacity may inhibit our ability to meet your request.

We will do our very best, however "Shipping within 10 business days-or it's free" is not applicable at this time.

spec™

## 10 DAY QUICKSHIP PROGRAM MANHATTAN



MODEL	BASES		TOP SPECIFICATIONS	OPTIONS	MOBILITY	LBS
	Code	Qty.	For Laminate Top 2MM	FLIP TOP Add	CASTERS Add	
Round						
36D	MNX	1	1043	195	116	55
42D	MNX	1	1404	195	116	69
Square						
36 X 36SQ	MNX	1	1067	195	116	55
Rectangle						
24 X 48RE	MNT, MNC	2	1032	390	116	71
24 X 60RE	MNT, MNC	2	1111	390	116	79
30 X 60RE	MNT, MNC	2	1174	390	116	90
30 X 72RE	MNT, MNC	2	1470	390	116	100



MNX



MNT



MNC

### STANDARD FEATURES

- Select from 15 standard laminates.
- Standard with leveling glides.
- Bases available in Black or Silver only.
- Silver or Black 2mm edge.
- Standard 29" table height.
- Locking Casters are not self-leveling.
- Base span increases with size of top.
- Quantity limit of 20 tables.

### OPTIONS

- 2" grommet and oval grommet.
- Flip top.
- Casters.
- Seam connectors for joining and leveling tops.

### HOW TO ORDER

1. Select Model
2. Select Base
3. Select Edge Style
4. Select Options
5. Select Top Finish
6. Select Edge Finish
7. Select Base Finish

Example: 36D - MNX - 2MM -

MODEL BASE EDGE OPTIONS